



# State Library of Pennsylvania



Kathy Hale

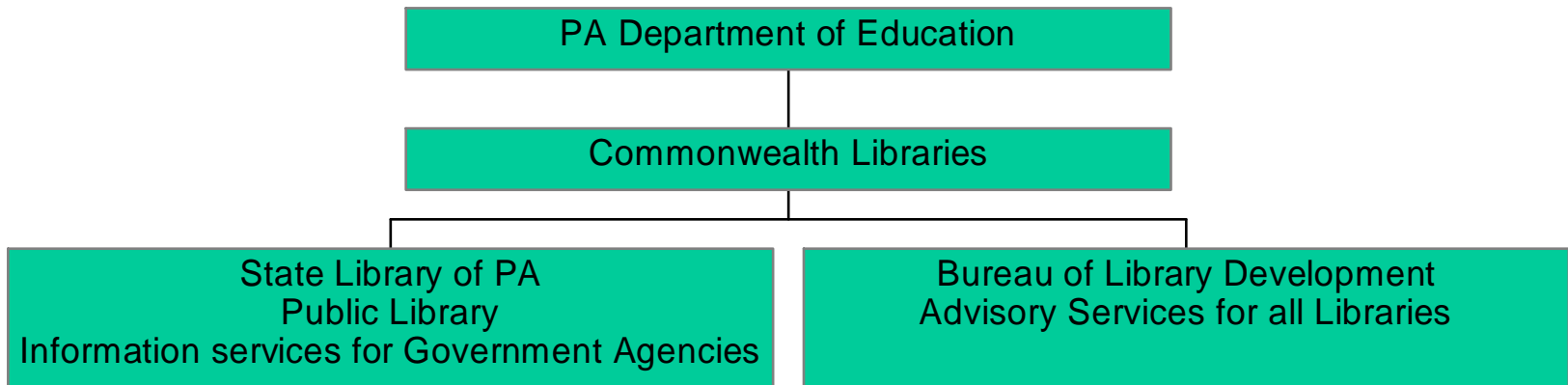
State Library of PA

(717) 787-2327

[khale@state.pa.us](mailto:khale@state.pa.us)

# What is the State Library?

## State Library Organization



# What's at the State Library?

- Main Reading Room
- Genealogy Reading Room
- Newspaper Room
- Law/Government Docs

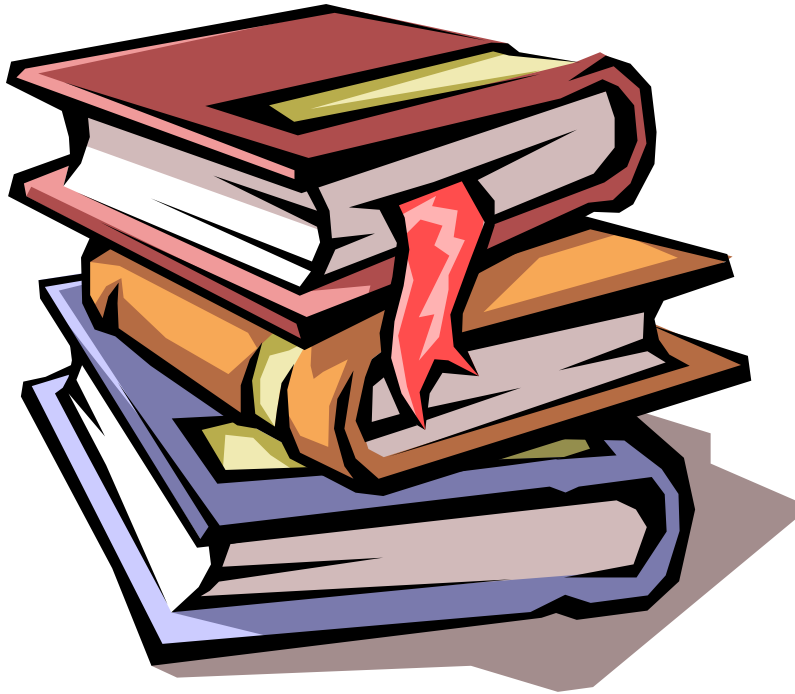


# Main Reading Room



- Over 900,000 monographs on a wide variety of subjects
- Over 3000 periodicals and 5000 maps
- Materials cover from 1800's to present

# Genealogy Reading Room



- County histories of all 67 counties
- Family histories with a card catalog index of previously researched families
- U.S. Census for PA from 1790-1930
- Immigration lists, Business Census and City Directories

# Newspaper Room



- Newspapers from each of 67 counties dating back to 1700's
- English speaking foreign papers such as the London Times
- Database searching capabilities

# Law/Government Documents



- Laws from all 50 states
- Wide variety of law periodicals and books on subjects concerning the law
- Regional Federal Depository
- Pennsylvania Depository

# POWER Library



- Full text Databases available through Local Public Library
- Access to over 100,000 articles from various periodicals, newspapers and photo archives

# Some Important Numbers

- Information 787-4440
- Newspapers 787-3883
- Law/Government Documents 787-3273
- Email – [ra-reference@state.pa.us](mailto:ra-reference@state.pa.us)

**STUMPED?**



**Call us @ 783-KNOW**

**-- or email: [ra-reference@state.pa.us](mailto:ra-reference@state.pa.us)**

**INFORMATION *is* OUR BUSINESS**

# Historical Census Data



Finding the past

Kathy Hale, M.L.S.

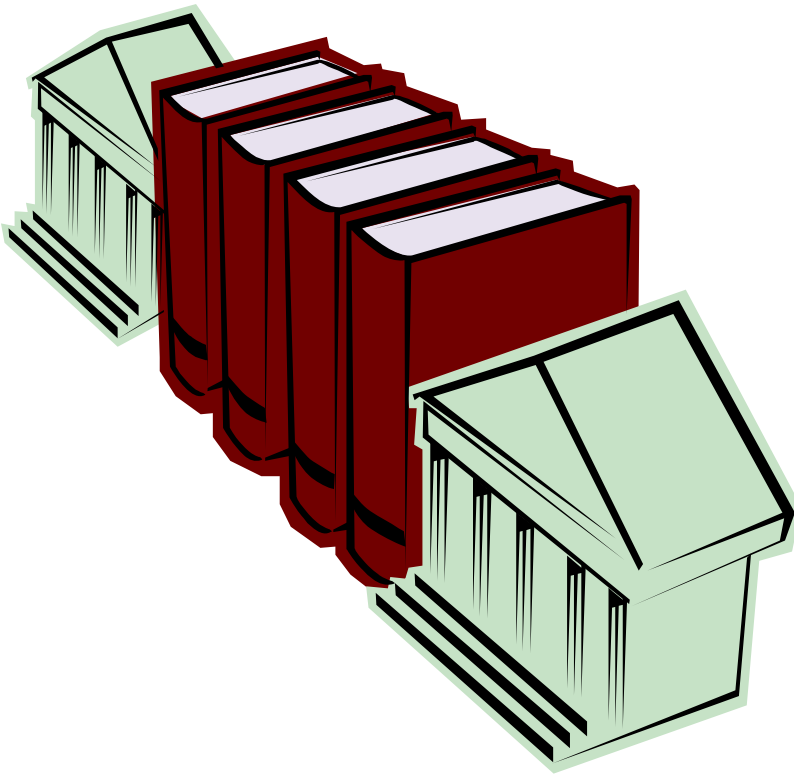
Government Documents Librarian

State Library of Pennsylvania

# What is out there?

- What kinds of resources are out there?
- What kind of information is in these sources?
- Where can these sources be found?
- Are there electronic sources or is everything in books?

# What kind of information are you seeking?



- Federal
- State
- Local
- Health statistics
- Population
- Housing

# Federal Information

- U.S. CENSUS ([www.census.gov](http://www.census.gov))
- Much of the pre-1990 material is not available free on the web
- Reliance on Federal Depository libraries

# Federal Depository Library Program

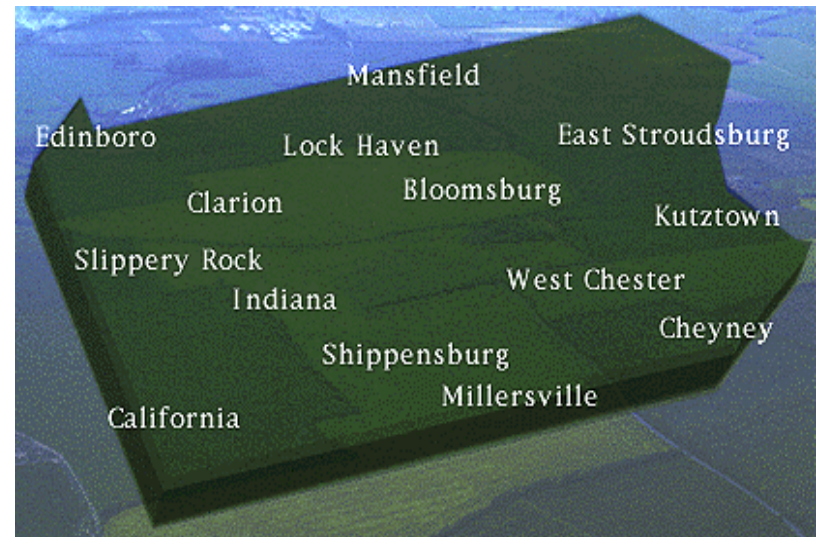


- Over 2500 federal depository libraries
- Find at <http://www.gpoaccess.gov/libraries.html>
- Two types: Selectives (Collect smaller percentage) and Regional
- The State Library of Pennsylvania is the

# State Information

- Historical Index
- Decennial census
- Counties changed over the years

Use **Pennsylvania Atlas of Historical County Boundaries** by John H. Long



# County Information

- National Association of Counties (NACO) has total census figure for county on website for each county

[www.naco.org](http://www.naco.org)

- >> Code of Ethics
- >> Codes & Ordinances
- >> Data & Demographics
- >> **Find a County**
- >> County Government Overview
- >> History of County Government
- >> Learn About Counties

## About Counties



PRINT THIS PAGE



EMAIL A FRIEND



EMAIL UPDATES

SHARE

Home → About Counties → Find a County

### Dauphin County, PA

P.O. Box 1295  
County Courthouse  
Harrisburg, PA 17108-1295  
Phone: (717) 255-2740  
Fax: (717)257-1604

**County Seat:** Harrisburg  
**Year Organized:** 1785  
**Square Miles:** 525  
**Size of Board:** 3  
**MSA:** Harrisburg-Carlisle, PA Metropolitan Statistical Area

### NACo Member

#### County Populations

1980	1990	2000	2005
231,918	237,813	251,798	253,995

- [Places in Dauphin County](#)
- [Census Bureau Quick Facts](#)

#### Elected County Officials

Name	Position
<a href="#">Dominic DiFrancesco</a>	Commissioner
<a href="#">George Hartwick III</a>	Commissioner
<a href="#">Jeffrey Haste</a>	Commissioner, Chair
John Lotwick	County Sheriff
Steve Shaver	Director of Emergency Management

# Local Information

- Historical Societies
- Court Houses
- Federal Depository Libraries, especially  
Regional
- The hardest to come by, especially  
historically

# Population

- Remember that each decennial Census asked different questions and may not compare the same information
- Questions are asked about different population groups at each decennial census so there might not be information on the demographic group that you are asking about

# Web resources

- University of Virginia

[University of Virginia Library](#)

- U.S. Census – special tables

[Selected Historical Decennial Census Population and Housing Counts](#)

- National Historic Geographic Information (NHGIS)

[Historical Census Data From the National Historical Geographic Information System - Free Geography Tools](#)

# Different types of historical Census

- Agricultural Census

[Census of Agriculture - Historical Census Publications](#)

- Social Explorer (subscription for data)

[Social Explorer - Demographic Maps](#)

- Statistical Abstract

[The 2008 Statistical Abstract: Earlier Editions](#)

Come to the State Library

to find cool stuff

**STUMPED?**



State Library of Pennsylvania

**Call us @ 783-5950**

**-- or email form**

**[www.education.state.pa.us](http://www.education.state.pa.us)**



**INFORMATION *is* OUR BUSINESS !**